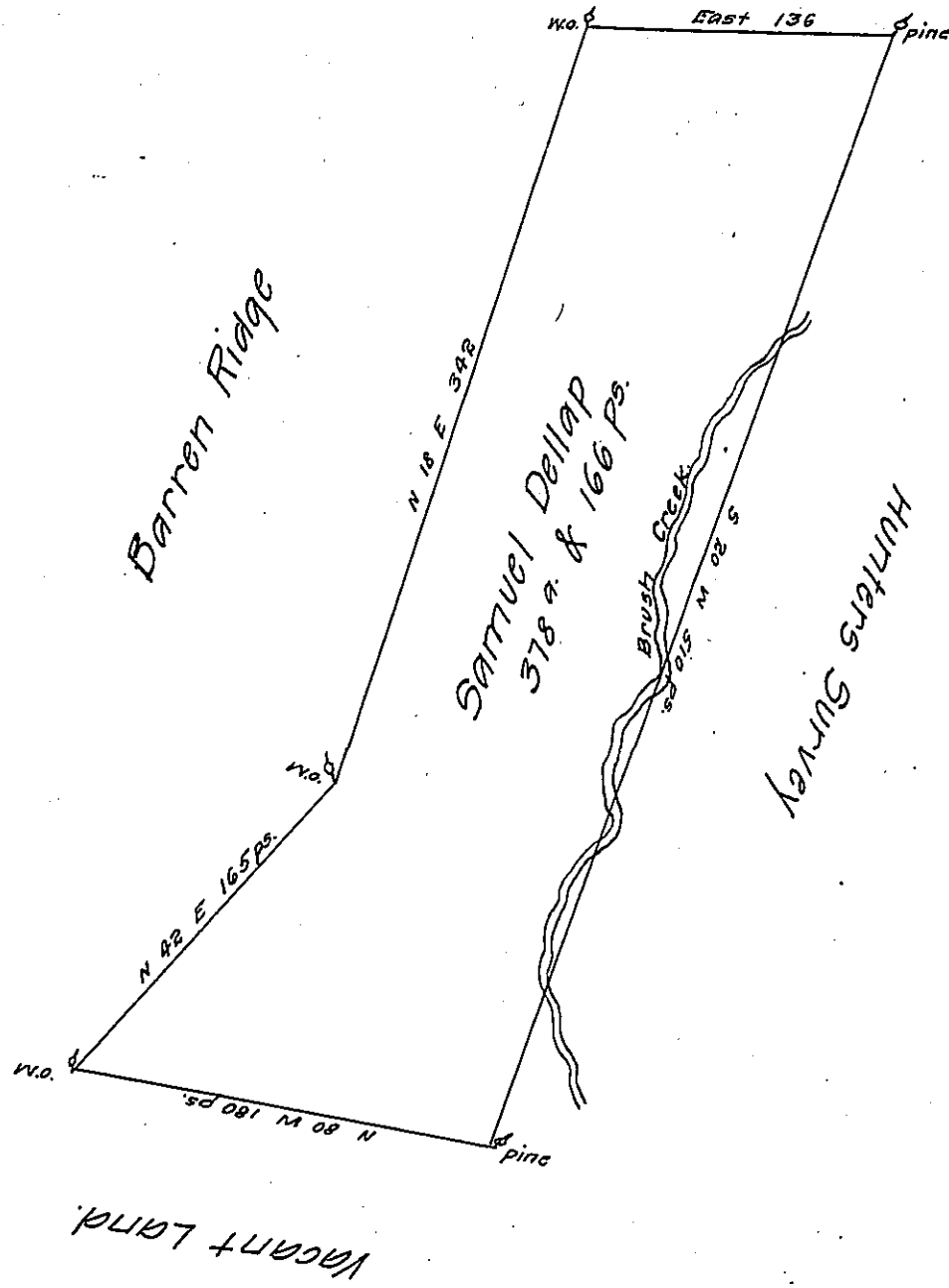


FORM NO. 1.



A Draught of a tract of land Situate on the North Branch of Brush Creek in Providence township in the County of Bedford Containing three hundred and seventy eight acres and one hundred and sixty six perches with the usual allowance of six per cent for roads &c. Surveyed for Samuel Dellap the 21<sup>st</sup> Day of April 1786. In pursuance of a warrant Dated March 12<sup>th</sup> 1785.

George Woods D.S.

To John Lukens Esqr. S.G.

IN TESTIMONY that the above is a copy of the original remaining on file in the Department of Internal Affairs of Pennsylvania, made conformably to an Act of Assembly approved the 16th day of February 1833, I have hereunto set my hand and caused the Seal of said Department to be affixed at Harrisburg, this eleventh day of November 1907.

*Henry Howell*  
Secretary of Internal Affairs.